

Traditional Picnic Table With Heavy Duty Frame

PRODUCT OUTLINE



An ideal solution for many parks, campgrounds, and conservation areas. Traditional 6' and 8' Accessible models are available with either Pressure Treated Wood or Recycled Plastic Planks. Available with either a powder coated or hot dip galvanized frame for long-lasting protection from the elements.

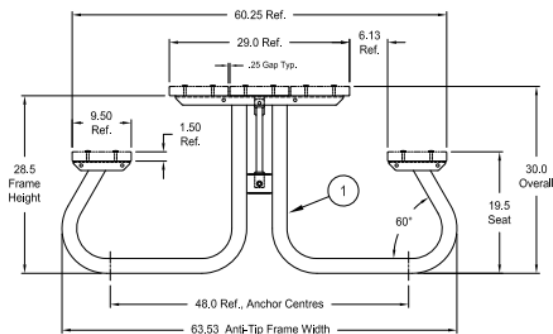
LENGTH 6'

PLANK MATERIAL OPTION Pressure Treated Wood
Recycled Plastic

MATERIALS Steel Tube
Steel Plate
Stainless Steel Hardware

FINISH Powder Coat
Hot Dipped Galvanized

MOUNT Surface



For additional details on materials and finishes, please refer to the detailed specifications for each product.