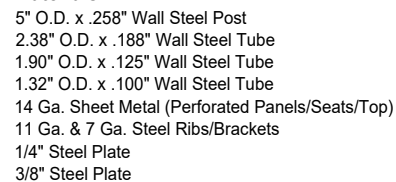


Rev. 23Apr20

(Also Available as Standard Version with 4 Seats: ST-CC-4S-SM)



Anchoring Notes: This unit is designed to be installed on reinforced, fully cured concrete that is at least 6" thick. An acceptable alternative would be to pour separate reinforced piers for the centre post and each seat post. The centre pier would need to be approx. 30" dia. x 48" deep. The post mounting plate requires 8 expanding wedge anchor bolts (or similar) measuring at least 1/2" x 5" long. 2 similar anchor bolts per seat are required measuring at least 3/8" x 3" long. Anchoring Hardware is Not Included.

Perforation Pattern:
— Ø1.25" Holes
on 2.5" Centres

