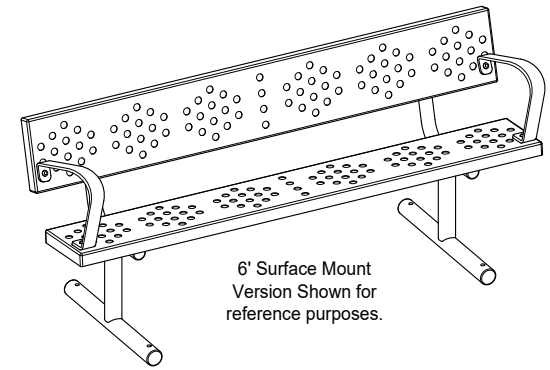


8' Park Bench with Back

In-Ground or Portable/Surface Mount with Perforated Steel Planks and Armrests

- Specifications -

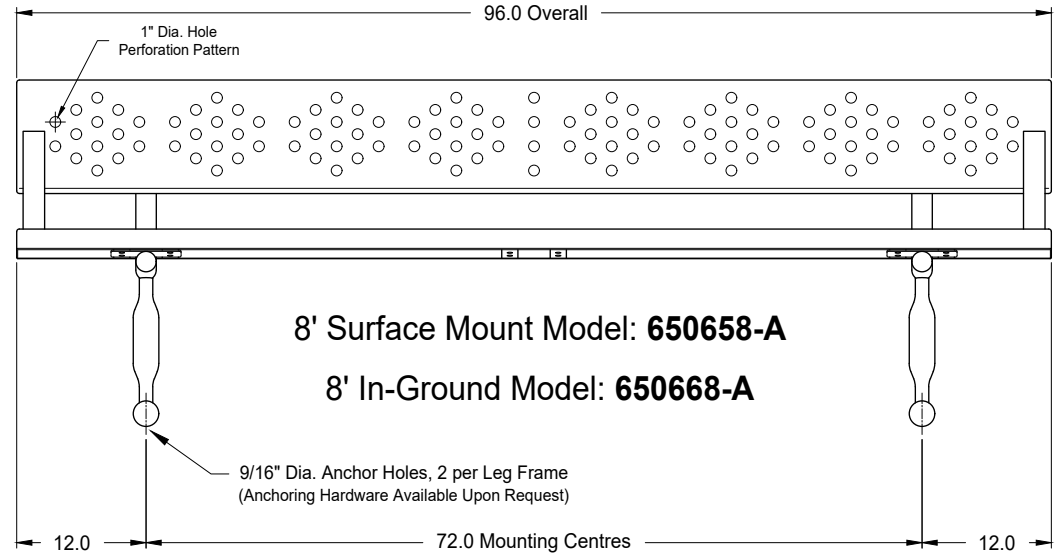
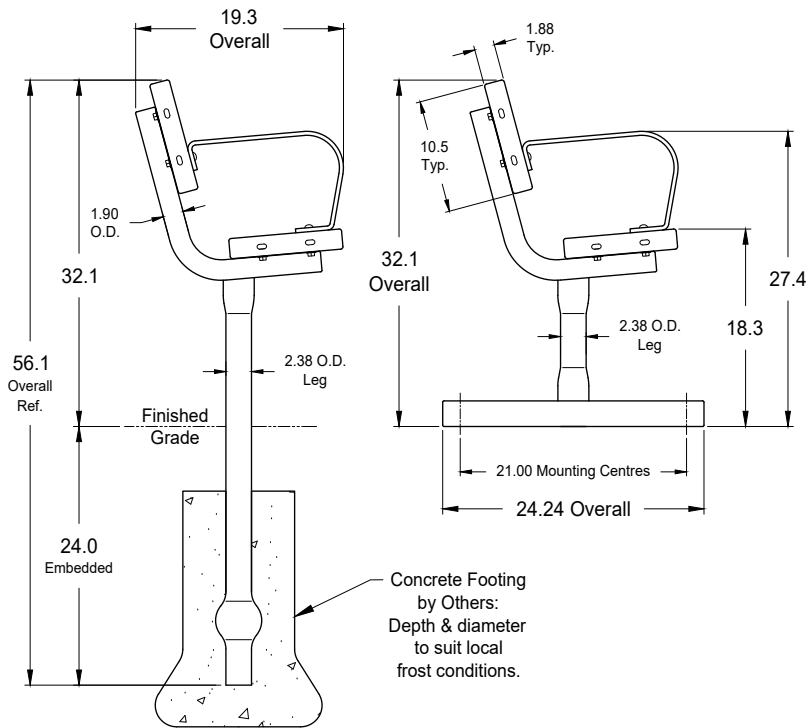
Rev.: 12Dec22



6' Surface Mount Version Shown for reference purposes.

In-Ground Leg Style

Portable/Surface Mount Leg Style



Materials:

- 2.375" O.D. x .125" Wall HSS Tube (Leg Tubes)
- 1.9" O.D. x .125" Wall HSS Tube (Seat Tubes)
- 11 Ga. Steel (Bolting Plates)
- 13 Ga. Perforated Steel (Seat & Backrest Planks)
- 7 Ga. Steel (Seat Brackets/Ribs)
- 3/8" x 2" Steel Bar (Armrests)
- Stainless Steel Hardware
- Anchoring Hardware Available Upon Request

Seat Plank Finish:

Polyester Powder Paint over Zinc Rich Primer.

Leg Frame Finishes:

- 1) Polyester Powder Paint over Zinc Rich Primer.
- 2) Hot Dip Galvanized.

Notes:

Dimensions shown are in inches.
 Knill Fabrication Ltd. maintains a policy of continuous product improvement. As a result, some details may change without notice.

Typical Assembly Method

