

SELECT DESIRED MOUNT:

- IN-GROUND/ EMBEDDED (650666)
- SURFACE MOUNT/ PORTABLE (650656) [SHOWN]

SELECT DESIRED BENCH:

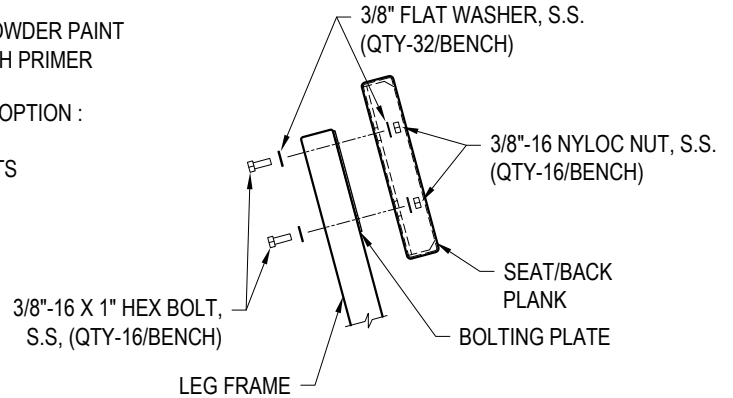
- STANDARD (SHOWN)
- BUDDY

SELECT DESIRED LEG FRAME FINISH :

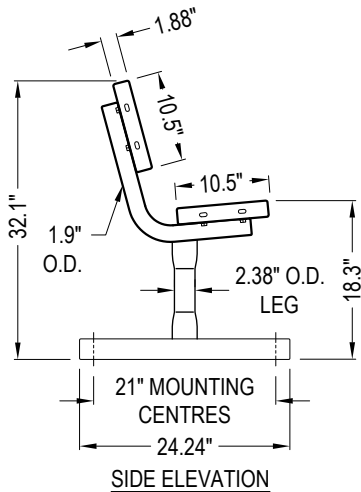
- HOT DIP GALVANIZED
- POLYESTER POWDER PAINT OVER ZINC RICH PRIMER

SELECT DESIRED OPTION :

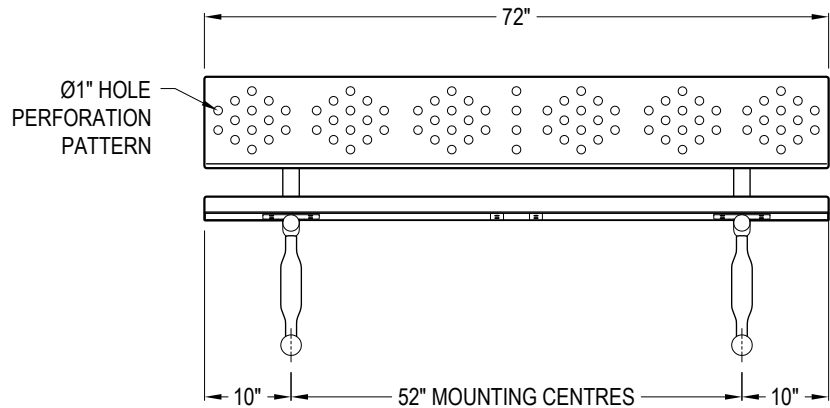
- WITH ARMRESTS



TYPICAL ASSEMBLY METHOD



SIDE ELEVATION



FRONT ELEVATION

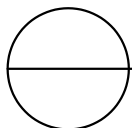
SPECIFICATIONS

FINISH (SEAT PLANK): POLYESTER POWDER PAINT OVER ZINC RICH PRIMER

MATERIAL: (LEG TUBES) 2.375" O.D. X 0.125" WALL HSS TUBE, **(SEAT TUBES)** 1.9" O.D. X 0.125" WALL HSS TUBE, **(BOLTING PLATES)** 11 GA STEEL, **(SEAT & BACKREST PLANKS)** 13 GA PERFORATED STEEL, **(SEAT BRACKETS/RIBS)** 7 GA STEEL, **(HARDWARE)** STAINLESS STEEL - ANCHORING HARDWARE NOT INCLUDED

NOTES:

1. INSTALLATION TO BE COMPLETED IN ACCORDANCE WITH MANUFACTURER'S SPECIFICATIONS.
2. DO NOT SCALE DRAWING.
3. THIS DRAWING IS INTENDED FOR USE BY ARCHITECTS, ENGINEERS, CONTRACTORS, CONSULTANTS AND DESIGN PROFESSIONALS FOR PLANNING PURPOSES ONLY. THIS DRAWING MAY NOT BE USED FOR CONSTRUCTION.
4. ALL INFORMATION CONTAINED HEREIN WAS CURRENT AT THE TIME OF DEVELOPMENT BUT MUST BE REVIEWED AND APPROVED BY THE PRODUCT MANUFACTURER TO BE CONSIDERED ACCURATE.
5. CONTRACTOR'S NOTE: FOR PRODUCT AND COMPANY INFORMATION VISIT www.CADdetails.com/info AND ENTER REFERENCE NUMBER 5436-061.



BENCHES

(650656) TRADITIONAL PARK BENCH, 6', PERFORATED STEEL, SURFACE MOUNT/PORTABLE