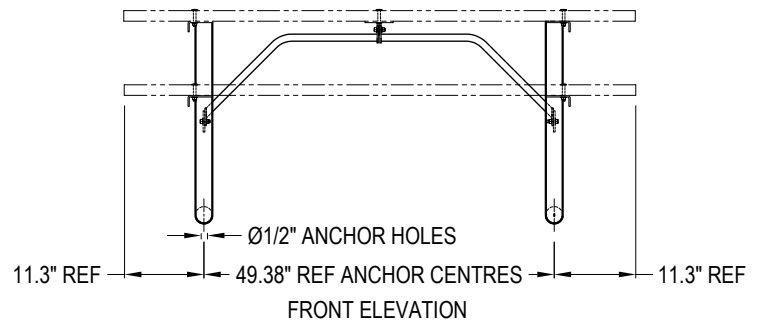
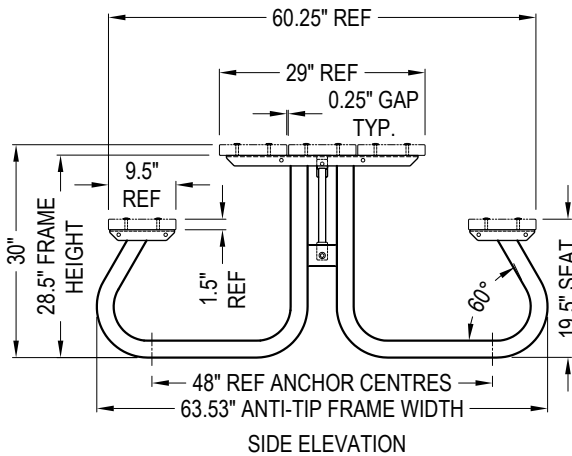
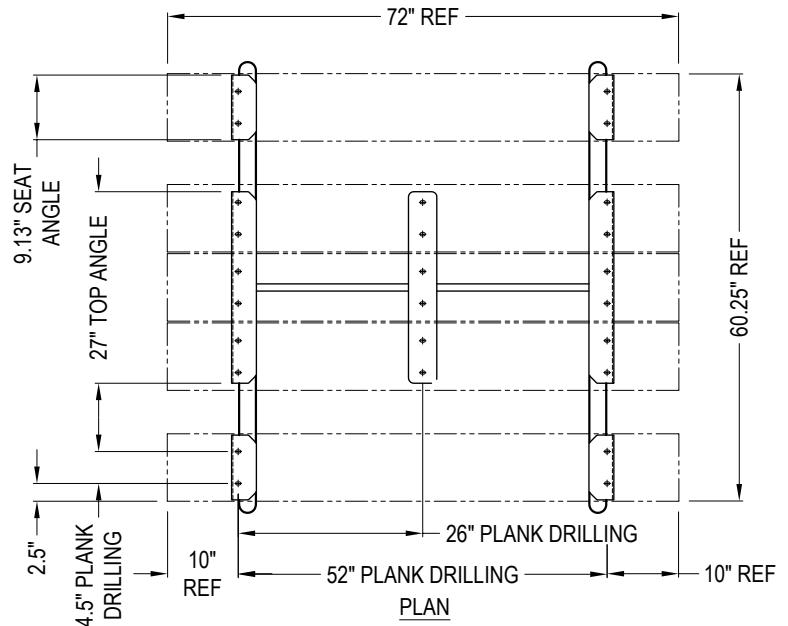


SELECT DESIRED FRAME FINISH:

- HOT DIP GALVANIZED
- PAINTED (POLYESTER POWDER PAINT OVER ZINC RICH PRIMER)



**SPECIFICATIONS**

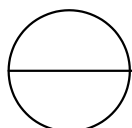
**MATERIAL: (FRAME/LEG SECTION)** 2.375" O.D. X 0.125" WALL STEEL TUBE, **(DIAGONAL BRACES)** 1" X 1" 0.125" WALL STEEL TUBE, **(BRACKETS/SUPPORT)** 3/16" THICK STEEL PLATE, **(SEAT AND TOP PLANKS)** 2" X 10" NOMINAL X 72" PRESSURE TREATED WOOD, **(HARDWARE)** 3/8"-16 STAINLESS STEEL

**WARRANTY:** 5 YEARS (STRUCTURAL FAILURE OF ALL STEEL FRAMES OR CAST ALUMINUM COMPONENTS), 1 YEAR (WORKMANSHIP OR MANUFACTURING DEFECTS)

- ANCHORING HARDWARE NOT INCLUDED

**NOTES:**

1. INSTALLATION TO BE COMPLETED IN ACCORDANCE WITH MANUFACTURER'S SPECIFICATIONS.
2. DO NOT SCALE DRAWING.
3. THIS DRAWING IS INTENDED FOR USE BY ARCHITECTS, ENGINEERS, CONTRACTORS, CONSULTANTS AND DESIGN PROFESSIONALS FOR PLANNING PURPOSES ONLY. THIS DRAWING MAY NOT BE USED FOR CONSTRUCTION.
4. ALL INFORMATION CONTAINED HEREIN WAS CURRENT AT THE TIME OF DEVELOPMENT BUT MUST BE REVIEWED AND APPROVED BY THE PRODUCT MANUFACTURER TO BE CONSIDERED ACCURATE.
5. CONTRACTOR'S NOTE: FOR PRODUCT AND COMPANY INFORMATION VISIT [www.CADdetails.com/info](http://www.CADdetails.com/info) AND ENTER REFERENCE NUMBER 5436-060.



## PICNIC TABLES

(650615)TRADITIONAL PICNIC TABLE, 6', HEAVY DUTY STEEL FRAME, 2X10 WOOD PLANKS, SURFACE MOUNT/PORTABLE